

3 Operating the automatic solar control unit

When the motor has been stopped manually or automatically in the UP direction, brightness is then measured. If the "Sun" reference value is exceeded, then the sun symbol (☀) is displayed on the control.

If the reference value is exceeded for more than 5 minutes, the roller shutter moves down level with the sensor, stops and moves briefly upward to exposed the sensor again (50% above the threshold).

◀ **The shutter is now in the Shade 1 position and the sun symbol (☀) is displayed permanently.**

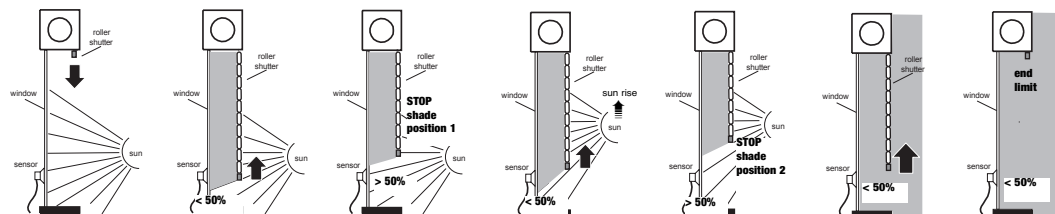
If the brightness falls below 50% of "Sun" reference value (sun rise), the sun symbol (☀) starts to flash. If this value remains below for more than 15 minutes, the control unit issues an UP command.

If the brightness measured during the UP command does not exceed 50% of "Sun" reference value anymore, then the shutter moves to its end limit. If the brightness exceed 50% during the UP command, then the shutter stops.

◀ **The shutter is now in the Shade 2 position and the sun symbol (☀) is displayed permanently.**

If the brightness falls below 50% again for more than 15 minutes when the shutter is in shade position 2, then this one will be retracted to its UP limit.

There are 2 shade positions.



Venetian blind operation (VB mode)

In VB mode an intermediate position (IP) and a (slat) rotating time have to be memorised. (Please follow the control unit's usage instructions). The brightness sensor must be attached to the window in such a way that it is not shaded in the intermediate position (IP) by the venetian blind.

If the "Sun" reference value is exceeded for more than 5 minutes, the venetian blind moves into the intermediate position (IP), stops there and rotates the slats. As soon as the "Sun" reference value falls below 50% for more than 15 minutes, the shutter moves back directly to its UP end limit.

With Chronis RTS L or Chronis Comfort RTS, this function can be carried out only in conjunction with a suitable radio receiver that can move the blind to an intermediate position (IP) with slat rotating time.

Australia : SOMFY Pty LTD (61) 2 8845 7200	Czech Republic : SOMFY Spol s.r.o. (420) 2 96 372 486-7	Hungary: SOMFY Kft (36) 1814 5120	Lebanon : SOMFY MIDDLE EAST (961) 1 391 224	Romania: SOMFY SRL +40 368 444 081	Switzerland : SOMFY A.G (41) 44 838 40 30
Austria : SOMFY GesmbH (43) 662 62 53 08	Denmark : SOMFY DENMARK (45) 65 32 57 93	India : SOMFY INDIA PVT LTD (91) 11 41659176	Mexico : SOMFY MEXICO SA de CV 52 (55) 5390-5664	Russia : SOMFY LLC (007) 495 360 47 72	Thailand: Somfy Bangkok Regional Office (886) 2 8509 8934
Belgium : SOMFY BELUX (32) 2 712 07 70	Finland : SOMFY FINLAND (358) 9 57 130 230	Israel : SISA HOME AUTOMATION LTD (972) 3 952 55 54	Morocco : SOMFY MAROC SARL (972) 22 94 11 41	Singapore : SOMFY PTE LTD (65) 6383 3855	Turkey: SOMFY EV OTOMASYON SISTEMLERI LTD STI (90) 216 651 30 15
Brazil : SOMFY BRASIL LTDA (55-11) 3695 3585	France : SOMFY FRANCE (33) 4 50 96 70 96	Italy : SOMFY ITALIA S.R.L (39) 02 48 47 181	Netherlands : SOMFY BV (31) 23 55 44 900	United Arab Emirates : Somfy GULF (971) 4 88 32 808	United Kingdom : Somfy LTD (44) 113 391 3030
Canada: SOMFY ULC (1) 905 564 6446	Germany : SOMFY GmbH (49) 74 72 93 00	Japan : SOMFY KK + 81 (0)45 488 0260	Norway : SOMFY NORWAY (47) 815 00 813	Spain: SOMFY ESPAÑA SA (S) (34) 93 480 09 00	United States : SOMFY SYSTEMS Inc (1) 609 395 1300
China : SOMFY CHINA CO LTD (86-21) 6280 9660	Greece : SOMFY HELLAS SA (30) 210 614 67 68	Kingdom of Saudi Arabia SOMFY SAUDI (966) 1 46 02 748	Poland : SOMFY SP Z.O.O (48) 22 818 02 97	Sweden : SOMFY NORDIC AB (46) 40 165 900	
Cyprus : SOMFY MIDDLE-EAST CO LTD (357) 25 345 540	Hong Kong: SOMFY Co. Ltd (852) 2523 63 39	Kuwait SOMFY KUWAIT (965) 434 89 01	Portugal: SOMFY PORTUGAL (351) 229 396 840		

Failure to comply with these instructions annuls Somfy's responsibilities and guarantee. Somfy cannot be held responsible for any changes in norms and standards introduced after the publication of this guide. Hereby, SOMFY, declares that this product is in compliance with the essential requirements and other relevant provisions of Directive 1999/5/EC. A Declaration of Conformity is available at the web address www.somfy.com/CE. Usable in EU, ☼

INSTALLATION *guide*

inteo Light sensor



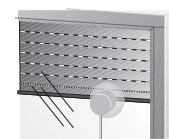
Together with the SOMFY Chronis Uno L, Chronis IB L, Chronis RTS L, Chronis Comfort RTS, Chronis Comfort IB and Chronis Comfort UNO, the SOMFY brightness sensor can be used to operate your roller shutters and venetian blinds in relation to the amount of light. These SOMFY control units have an integrated automatic solar control unit (L = light control) that automatically creates shadow if the sunshine is too strong.

In addition, the SOMFY Chronis Uno L, Chronis IB L, Chronis Comfort IB and Chronis Comfort UNO offer an automatic dusk control unit that operates your roller shutters and venetian blinds in conjunction with the switching time when dusk sets in.

1 Installation



Insert the plug of the brightness transmitter into the socket on the front of the Chronis L (or Chronis Comfort) control unit.



Stick the suction cap of the brightness sensor to the inside of the window pane at the desired shade position of the roller shutter.

2 Programming

2.1 Automatic solar control unit with a Chronis L

Switching the automatic solar control unit on / off.



The automatic solar control is activated when the UP switching time is reached and de-activated when the DOWN switching time is reached. This means the following in normal use: the automatic solar control unit is switched on during the day and off at night. When it is on, a ☀ is shown in the display. You can switch the automatic solar control unit on or off manually during the day.

To switch the automatic solar control unit off:



- Press **OFF** once ◀ the time flashes.
- Press **▲** until the bar display for the "Sun" reference value is displayed.
- Press **◀** several times until **hOFF** is displayed.
- Press **OFF** to store the changes.

To switch the automatic solar control unit back on:



- Press **OFF** once ◀ the time flashes.
- Press **▲** until **hOFF** is displayed.
- Press **◀** several times until the desired number of bars for the "Sun" reference value has been set.
- Press **OFF** to store the changes.

Setting the automatic solar control unit

The desired brightness value at which the shutter is to move into the shade position can be selected by entering the "Sun" reference value. The factory setting for the automatic solar control unit is a threshold value of 6 bars (30 kLux approximately). Inputting the "Sun" reference value (can be entered at any time except in the "OFF" position):



- press **OFF** once ◀ the time flashes.
- Press **▲** until the bar display for the "Sun" reference value is displayed.
- The "Sun" reference value can be set by pressing **◀** several times.

1 bar = roller shutter moves into the shade position if sun is weak (10 kLux).
12 bars = roller shutter moves into the shade position if sun is strong (more than 50 kLux).



- Press **OFF** to store the changes.

Tip: it is best to enter data when the sun reaches the intensity at which you wish to move the shutter automatically into the shade position in the future. First set the "Sun" reference value to 12 bars, and then press Minus (-) until the sun symbol (☀) is flashing. This value then corresponds to the current solar intensity.

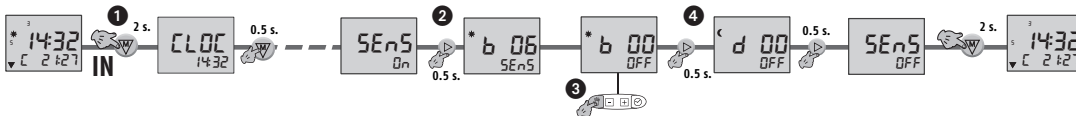
2.2 Automatic solar control unit with a Chronis Comfort

Switching the automatic solar control unit on / off.



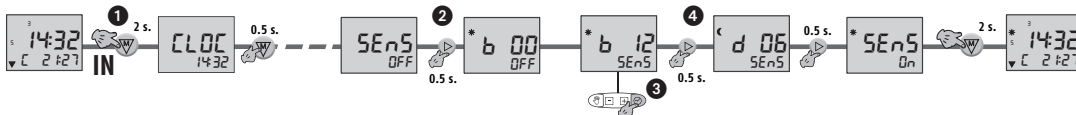
The automatic solar control is activated when the UP switching time is reached and de-activated when the DOWN switching time is reached. This means the following in normal use: the automatic solar control unit is switched on during the day and off at night. When it is on, a is shown in the display. You can switch the automatic solar control unit on or off manually during the day.

To switch the automatic solar control unit off:



- Press 2 seconds, then 0,5 seconds 6 times, until the "SEnS" screen.
- Press once to go to the brightness screen.
- Press several times until **OFF** is displayed.
- Press 0,5 seconds, then 2 seconds to store the changes.

To switch the automatic solar control unit back on:



- Press 2 seconds, then 0,5 seconds 6 times, until the "SEnS" screen.
- Press once to go to the brightness screen.
- Press several times to set the brightness reference value.
- Press 2 times, then 2 seconds to store the changes.

Brightness reference value :
 "1" = roller shutter moves into the shade position if sun is weak (10 kLux).
 "12" = roller shutter moves into the shade position if sun is strong (more than 50 kLux).

Tip: it is best to enter data when the sun reaches the intensity at which you wish to move the shutter automatically into the shade position in the future. First set the "Sun" reference value to 12, and then press Minus (-) until the sun symbol is flashing. This value then corresponds to the current solar intensity.

2.3 Automatic dusk control unit with a Chronis L (not with Chronis RTS L)

Switching the automatic dusk control unit on / off

You can switch the automatic dusk control unit on or off manually. The factory setting for the automatic dusk control unit is ON.

To switch the automatic dusk control unit off :



- Press 2s.
- Press until the bar display for the "Dusk" reference value is displayed.
- Press several times until **dOFF** is displayed.
- Press to store the changes.

To switch the automatic dusk control unit back on :



- Press once \leftarrow the time flashes.
- Press until **dOFF** is displayed.
- Press several times until the desired number of bars for the "Dusk" reference value has been set.
- Press to store the changes.

Setting the automatic dusk control unit

The desired dusk value at which the shutter is to close in conjunction with the switching time can be set by entering the "Dusk" threshold value.

The factory setting for the automatic dusk control unit is pre-set to a mean value of 6 bars (60 Lux approximately).

The "Dusk" reference value can be entered at any time except in the "OFF" position.



- Press once \leftarrow the time flashes.
- Press until the bar display for the "Dusk" reference value is displayed.
- The "Dusk" reference value can be set by pressing several times.

1 bar = roller shutter does not close until dusk has set (10 Lux).
 12 bars = roller shutter closes as early as the onset of dusk (250 Lux).

- Press to store the changes.

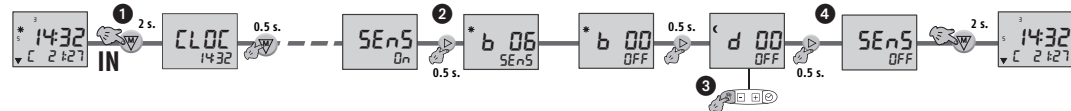
Tip: It is best to enter data when the evening dusk reaches the brightness level at which you wish to have the shutter close automatically in the future. To do this, set the "Dusk" reference value to 1 bar, and then press Plus (+) until the moon symbol is displayed. This value then corresponds to the current dusk setting.

2.4 Automatic dusk control unit with a Chronis Comfort (not with Chronis Comfort RTS)

Switching the automatic dusk control unit on / off

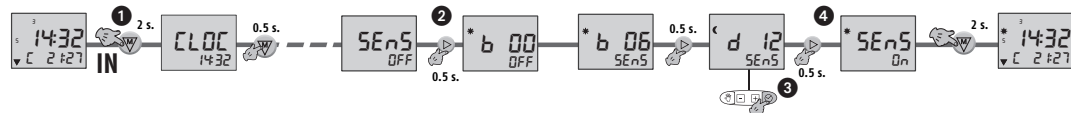
You can switch the automatic dusk control unit on or off manually. The factory setting for the automatic dusk control unit is ON.

To switch the automatic dusk control unit off :



- Press 2 seconds, then 0,5 seconds 6 times, until the "SEnS" screen.
- Press twice to go to the darkness screen.
- Press several times until **OFF** is displayed.
- Press 0,5 seconds, then 2 seconds to store the changes.

To switch the automatic dusk control unit back on :



- Press 2 seconds, then 0,5 seconds 6 times, until the "SEnS" screen.
- Press twice to go to the darkness screen.
- Press several times to set the darkness reference value.
- Press 0,5 seconds, then 2 seconds to store the changes.

Darkness reference value :

"1" = roller shutter does not close until dusk has set (10 Lux).
 "12" = roller shutter closes as early as the onset of dusk (250 Lux).

Tip: It is best to enter data when the evening dusk reaches the brightness level at which you wish to have the shutter close automatically in the future. To do this, set the "Dusk" reference value to 1, and then press Plus (+) until the moon symbol is displayed.

This value then corresponds to the current dusk setting.

2.5 Operating the automatic dusk control unit

As soon as the "Dusk" reference value does not meet the selected setting, the moon symbol is displayed. If the reference value remains below this level for more than 5 minutes approximately and the DOWN switching time has arrived already, the control unit gives a DOWN command. If the DOWN switching time has not been exceeded yet, the control unit waits until this time comes and then moves the shutter down.

Example:

DOWN switching time	Actual clock time	Dusk value	Action
20:00	19:45	reached	the DOWN arrow in the display flashes. Wait until switching time of 20.00 comes
20:00	20:15	Not reached yet	Display in window changes to next UP switching time and DOWN arrow flashes! Wait for as long as "Dusk" reference value is not met.
20:00	20:15	reached	Shutter moves down.

Note: The dusk function can be impaired with strong sources of light in the surroundings of the light sensor.